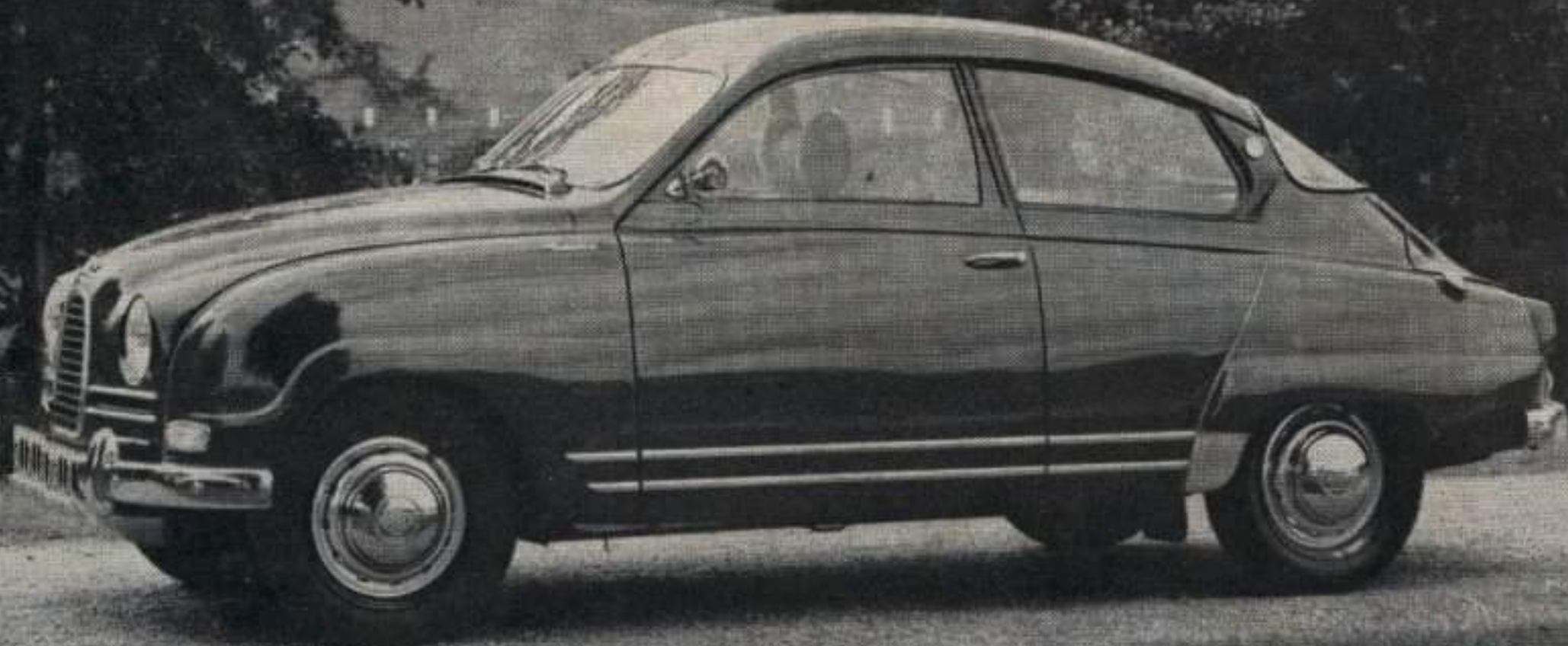


SAAB



Granturismo 750

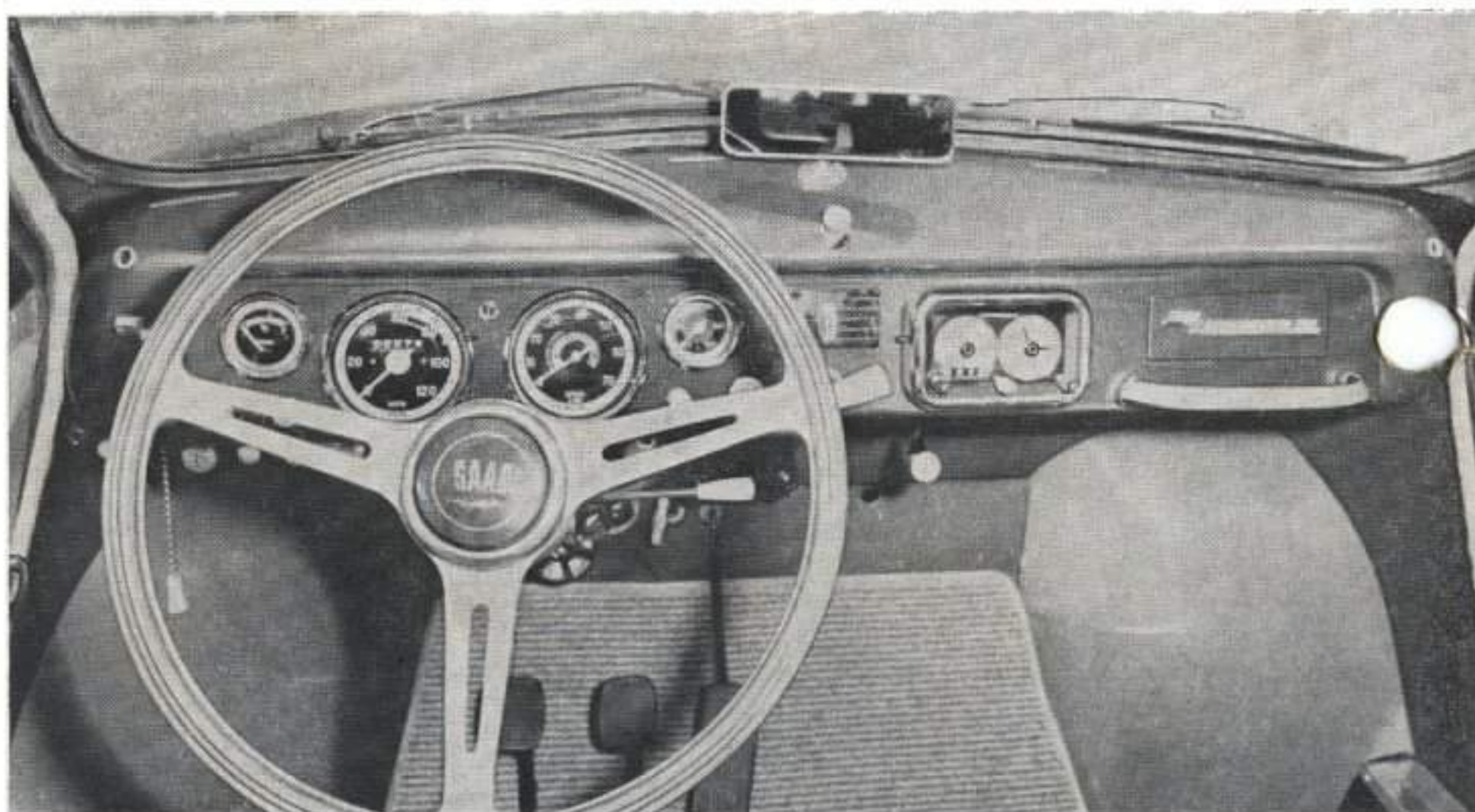
A car for the enthusiast

The Granturismo 750 is a luxurious sports car version of the standard Saab 96 saloon. Outstanding road holding ability and famed sturdiness in chassis and body are here coupled with dazzling performance and high comfort.

A large number of victories in gruelling rallies and other motor sports events are won with Saab cars, and this new Granturismo is really fit for fight. The GT can easily be adopted for competition purposes, a special tuning kit being used to raise the engine output and convert the car to the "750 Super" model.

Like other Saabs the GT has front-wheel drive for good traction and favourable weight distribution. The engine is a 750 cc, high compression, 3-cylinder two-stroke unit mounted to a single dry plate clutch and a four-speed gearbox.

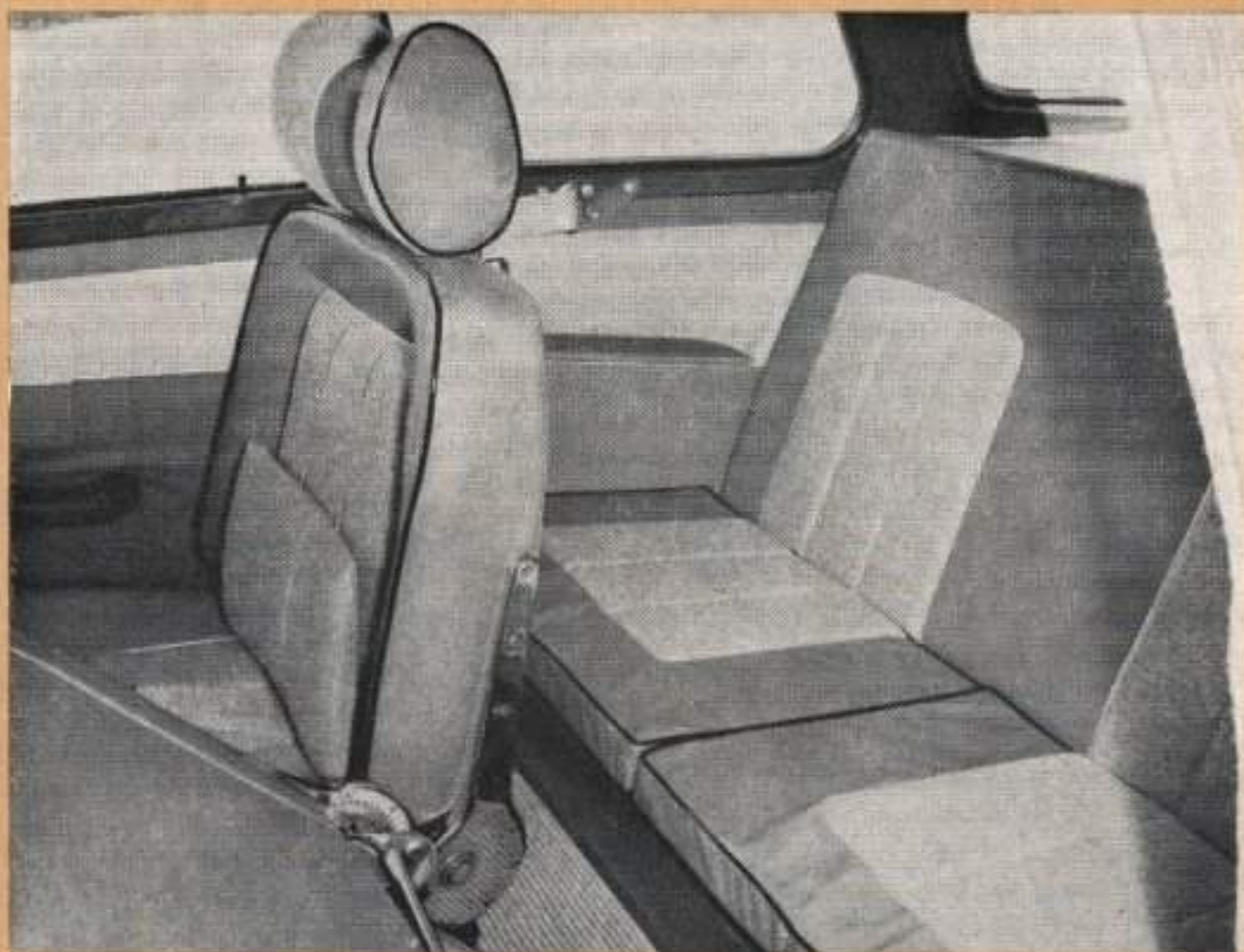
Several sports car accessories are included as standard equipment — rev. counter, Halda Speed Pilot and a racing-type, wooden rimmed steering wheel. Competition tires are fitted as well as large brakes in order to safely cope with the high speeds attainable by the Saab Granturismo 750 and 750 Super.



The SAAB Granturismo 750 is an outstanding example of Swedish quality precision work. It is roomy and safe. The front bucket seats are adjustable for individual comfort. The passenger seat, which is fitted with a head rest, can be lowered to a fully reclined position.



A rev. counter and a "Speed Pilot" are included in the comprehensive array of instruments. All controls are conveniently placed.



The Saab Granturismo is a 2+3 seater, generously equipped for safety, comfort and durability. The body is rust-proofed and undercoated at factory. There are safety belts for the front occupants, padded sunvisors and windshield washers. Under armrests at rear are storage pockets for thermos flasks etc. Heater and ventilation system has high capacity.



Technical description

Saab Granturismo 750 and 750 Super with four speed gearbox

General

Body	two-door sedan
Number of passengers ..	2+3 (including driver)
Overall length, including bumpers	approx. 13 ft. 2 in. (4015 mm)
Overall width	5 ft. 1.8 in. (1570 mm)
Overall height, empty	approx. 4 ft. 10 in. (1475 mm)
Road clearance (2 persons in front)	approx. 7.5 in. (190 mm)
Track, front and rear	4 ft. (1220 mm)
Wheelbase	8 ft. 2 in. (2488 mm)
Turning radius	approx. 18 ft. (5,5 m)
Empty weight, excl. fuel and water (Shipping weight)	approx. 1820 lb. (825 kg)
Empty weight, incl. fuel, water, tools and spare wheel	approx. 1907 lb. (865 kg)
Weight distribution, empty	57.5 % on front
Weight distribution, fully loaded	48 % on front
(with 4 persons and luggage, total weight 2835 lb)	
Luggage space	approx. 13 cu. ft. (370 l)
Frontal area	18 sq. ft. (1.72 m ²)
Air resistance coefficient	0.35

Engine

Type	three cylinders in line, two-stroke
Bore	2.59 in. (66 mm)
Stroke	2.87 in. (72.9 mm)
Displacement	46 cu. in. (748 cc)
Compression ratio, nominal	9.8:1

Horsepower

I SAE at 5000 r p m	48 B H P
DIN at 4500-5000 r p m	45 B H P
II* SAE at 5000 r p m	57 B H P
DIN at 4500-5000 r p m	55 B H P

Maximum torque

I 61.5 ft. lb. (8.5 mkg) at 3500 r p m (DIN)
II* 68.7 ft. lb. (9.5 mkg) at 4000 r p m (DIN)

Engine lubrication

Mixing ratio, oil/gasoline 1:25 (4 %)
Gasoline (premium), no lower than 90 octane

Fuel system

I Single, down-draft type carburetor, Solex 40 A I
II* Dual, down-draft type carburetor, Solex 44 P II
Electric fuel pump
Fuel tank at rear. Capacity 10.5 U.S. gal. (40 litres)

Cooling system

Water-cooling, circulation pump, thermostat and fan.
Capacity, including heater: approx. 2 U.S. gal. (7.5 litres).

Transmission

Front wheel drive.
Engine, clutch, gearbox and differential in one frontmounted unit.

Gearbox

4 forward gears and reverse. Steering column gear shift lever.
Gear ratios, total: 1st 18.3, 2nd 10.7 3rd 6.6 4th 4.3, reverse 15.0.
Differential gear ratio 5.1 (36:7).
Oil capacity, gearbox with differential, approx. 2 U.S. qts.
Speed, theoretical, at 1000 engine r p m, 4th gear: 15.4 m p h (24.8 km/h)

Clutch

Single dry plate with cushioning device. Outer diameter: 7 in. (180 mm)

*) Granturismo 750 "Super"

Suspension

Coil springs front and rear.
Independent front wheel suspension with transverse links.
U-shaped rigid rear axle.
Hydraulic telescope type shock absorbers front and rear.

Brakes

Lockheed hydraulic four-wheel brakes. Mechanically operating parking brake, acting on rear wheels.
Linings: 9"×13¼" front, 8"×11½" rear.
Total lining area: 105 sq. in. (675 cm²).

Steering

Rack and pinion type steering.
Steering gear ratio, average: 14:1.
Number of turns, lock to lock: 2¼.

Wheels and tires

Wide base disc wheels. Rim size: 4 J×15".
155×15" sports car tires, with tubes.

Electrical system

12 volts electrical system. 33 Ah battery. 0.5 hp starter.
160 watts generator. Centrifugal type automatic spark advance unit.

Performance (std GT model)

Hill climbing ability:
1st gear 42 %, 2nd gear 24 %.
3rd gear 13 %, 4th gear 8 %.
reverse gear 34 %.
Acceleration times, from standstill

¼ mile (402 meters)	about 20.4 sec.
1 kilometer	about 40.4 sec.
0-50 m p h	about 12.7 sec.
0-60 m p h	about 18.5 sec.
Top speed	about 85 m p h (135 km/h)

Saab Aircraft Company reserves the right to change above specifications at any time and without notice.

SVENSKA AEROPLAN AKTIEBOLAGET

Saab Aircraft Company

Works TROLLHÄTTAN

Export Department LINKÖPING

SWEDEN

STÅLHAMMAR/ZETTERQVIST 601112 F. 50355. 5000. 11. 60